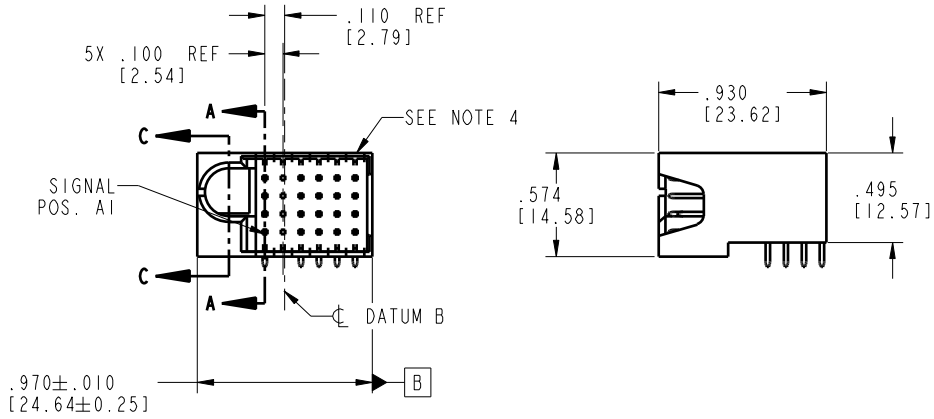
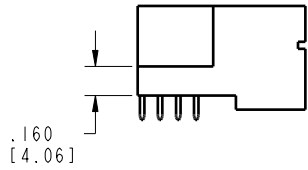


Tous droits strictement réservés. Reproduction ou communication o des liers interdite sous quelque forme que ce soit sans autorisation écrite du propriétaire. Propriété de c FCI. Droits de reproduction FCI.



All rights strictly reserved. Reproduction or issue to third parties in any form whatsoever is not permitted without written authority from the proprietor. Property of FCI. Copyright FCI.

PRODUCT NO.	ROWS	SIGNAL						
		E1	1	2	3	4	5	6
51939-151-- NOTE 3	D C B A		U	X	U	H	H	U
			T	X	T	G	G	T
			S	X	S	F	F	S
			R	X	R	E	E	R
			N	X	N	E	E	N



CODE	DIM "M" MATING LENGTH	CONTACT TYPE
E	.220 [5.59]	SIGNAL
F	.220 [5.59]	SIGNAL
G	.220 [5.59]	SIGNAL
H	.220 [5.59]	SIGNAL
R	.270 [6.86]	SIGNAL
S	.270 [6.86]	SIGNAL
T	.270 [6.86]	SIGNAL
U	.270 [6.86]	SIGNAL
X	OMITTED	OMITTED

mat'l code				SEE NOTE 2	tolerances unless otherwise specified		CUSTOMER			www.fciconnect.com
lir	ecr no.	dr	date	linear	.XX±.01/0.X±0.3	COPY		projection		
A	V04-1137	TAB	11/19/04		.XXX±.005/0.XX±0.13	INCH/MM			24S	
B	DG06-0013	RYAN	01/27/06	angles	.XXX±.002/0.XXX±0.051	scale		1:1	RIGHT ANGLE SOLDER HEADER	
				dr	T. BRUNGARD 11/19/04	product family		PwrBlade	code	
				engr	M. GRAY 11/19/04	size		A	213	
				chr	M. GRAY 11/19/04	dwg no		51939-151	sheet	
				appd	M. GRAY 11/19/04	code		22526	1 of 4	
sheet index	revision	B	B	B	B					
	sheet	1	2	3	4					

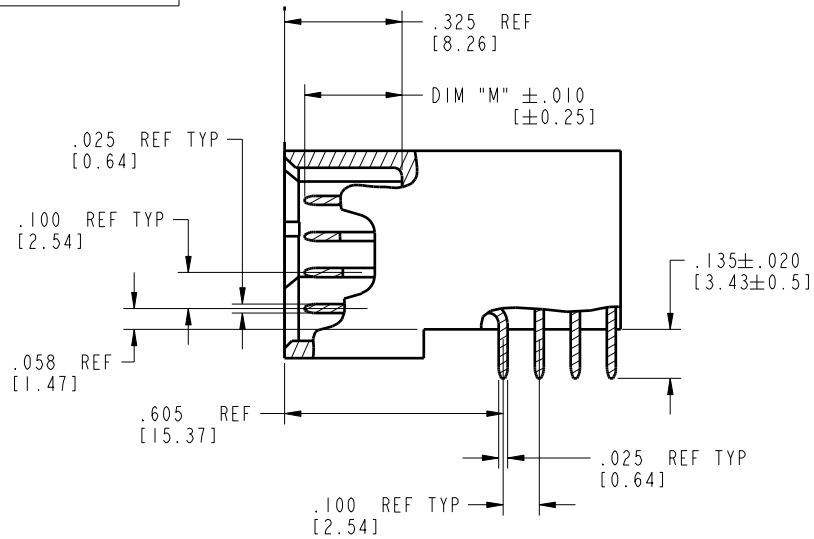
Pro/E

code code 22526

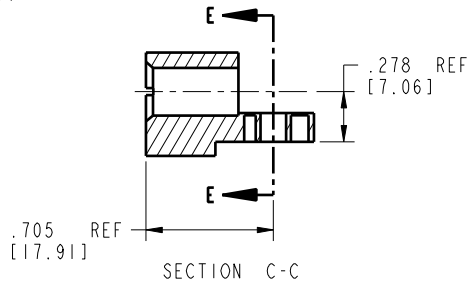
Tous droits strictement réservés. Reproduction ou communication à des tiers interdite sans quelque forme que ce soit sans autorisation écrite du propriétaire. Propriété de c FCI. Droits de reproduction FCI.

All rights strictly reserved. Reproduction or issue to third parties in any form whatsoever is not permitted without written authority from the proprietor. Property of FCI. Copyright FCI.

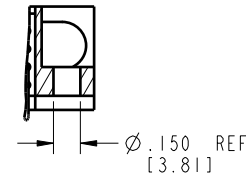
**PRODUCT NUMBER**  
51939-151\_\_  
NOTE 3



BROKEN-OUT SECTION A-A  
SCALE 2:1



SECTION C-C



PARTIAL SECTION E-E

mat'l code				SEE NOTE 2	tolerances unless otherwise specified		CUSTOMER			
lir	ecn no.	dr	date	linear	.XX±.01/0.X±0.3	COPY		www.fciconnect.com		
B				linear	.XXX±.005/0.XX±0.13	projection		title 24S		
				linear	.XXX±.002/0.XXX±0.051			RIGHT ANGLE SOLDER HEADER		
				angles	0°±2°	INCH/MM		product family PwrBlade code		
				dr	T. BRUNGARD 11/19/04	scale 1:1		size		
				engr	M. GRAY 11/19/04	A		dwg no 51939-151		
				chr	M. GRAY 11/19/04			sheet 213		
				appd	M. GRAY 11/19/04			sheet 2 of 4		
sheet index	revision sheet									

code code 22526

Pro/E

Tous droits strictement réservés. Reproduction ou communication à des tiers interdite sous quelque forme que ce soit sans autorisation écrite du propriétaire. Propriété de c FCI. Droits de reproduction FCI.



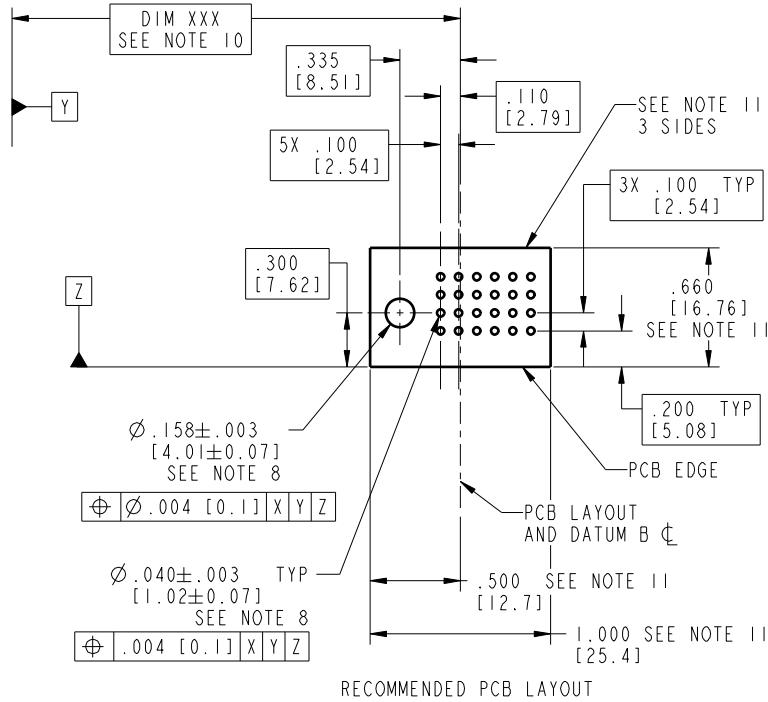
All rights strictly reserved. Reproduction or issue to third parties in any form whatsoever is not permitted without written authority from the proprietor. Property of FCI. Copyright FCI.

PRODUCT NUMBER  
51939-151\_\_  
NOTE 3

1 | 2

3 |

4



RECOMMENDED PCB LAYOUT

mat'l code				SEE NOTE 2	tolerances unless otherwise specified		CUSTOMER		 www.fciconnect.com
lir	ecm no.	dr	date	linear	.XX±.01/0.X±0.3	COPY		projection	
B					.XXX±.005/0.XX±0.13	INCH/MM		title	
				angles	.XXX±.002/0.XXX±0.051	scale		24S	
				dr	0°±2°	1:1		RIGHT ANGLE SOLDER HEADER	
				engr	T. BRUNGARD 11/19/04	product family		PwrBlade	
				chr	M. GRAY 11/19/04	size		code	
				appd	M. GRAY 11/19/04	dwg no		213	
sheet index	revision sheet					A		51939-151	
								3 of 4	

1 | 2

Pro/E

3 |

code code 22526

4

Tous droits strictement réservés. Reproduction ou communication à des tiers interdite sous quelque forme que ce soit sans autorisation écrite du propriétaire. Propriété de c FCI. Droits de reproduction FCI.



All rights strictly reserved. Reproduction or issue to third parties in any form whatsoever is not permitted without written authority from the proprietor. Property of FCI. Copyright FCI.

1 | 2

3 |

4

**PRODUCT NUMBER**

51939-151\_\_  
NOTE 3

NOTES:

1. DIMENSIONS AND TOLERANCES ARE IN ACCORDANCE WITH ASME Y14.5M, 1994 UNLESS OTHERWISE SPECIFIED.

CONNECTOR NOTES:

- 2. HOUSING MATERIAL: UL 94 V-0 GLASS FILLED HIGH-TEMP THERMOPLASTIC  
POWER CONTACT MATERIAL: COPPER ALLOY  
SIGNAL PIN MATERIAL: COPPER ALLOY
  - 3. PLATING:  
51939-151; 51939-151LF; 51939-151GLF SEE PRINT 10064183
  - 4. MANUFACTURER'S NAME, P/N, AND DATE CODE TO APPEAR ON THIS SURFACE.
  - 5. PRODUCT SPECIFICATION GS-12-149.  
APPLICATION SPECIFICATION BUS-20-067.
  - 6. PACKAGED IN TRAYS.
- PCB NOTES:
- 7. ALL HOLE DIAMETERS ARE FINISHED HOLE SIZE.
  - 8. MOUNTING HOLES, WHERE APPLICABLE, ARE UNPLATED.
  - 9.  $\varnothing .0453 \pm .0010$  [1.151  $\pm$  0.025] DRILLED HOLES PLATED WITH .0003 [0.008] MIN SnPb OVER .001 [0.03] TO .003 [0.08] Cu PLATING TO ACHIEVE  $\varnothing .040 \pm .003$  [1.02  $\pm$  .07] HOLE.
  - 10. "DIM XXX" TO BE DETERMINED BY THE CUSTOMER.
  - 11. CONNECTOR KEEP-OUT ZONE.

mat'l code		SEE NOTE 2		tolerances unless otherwise specified		CUSTOMER		A FCI		www.fciconnect.com		
lir	ecn no.	dr	date	linear	.XX±.01/0.X±0.3	projection	title	24S				
B					.XXX±.005/0.XX±0.13		RIGHT ANGLE SOLDER HEADER					
				angles	.XXX±.002/0.XXX±0.051							
				dr	T. BRUNGARD 11/19/04	INCH/MM	product family	PwrBlade		code	213	
				engr	M. GRAY 11/19/04		size	dwg no	51939-151			
				chr	M. GRAY 11/19/04		scale	A				
				opod	M. GRAY 11/19/04		1:1	4 of 4				
sheet index	revision sheet											

1 | 2

Pro/E

3 |

code code 22526

4